

Consider HSS for your knee replacement

# Knee Replacement Scorecard

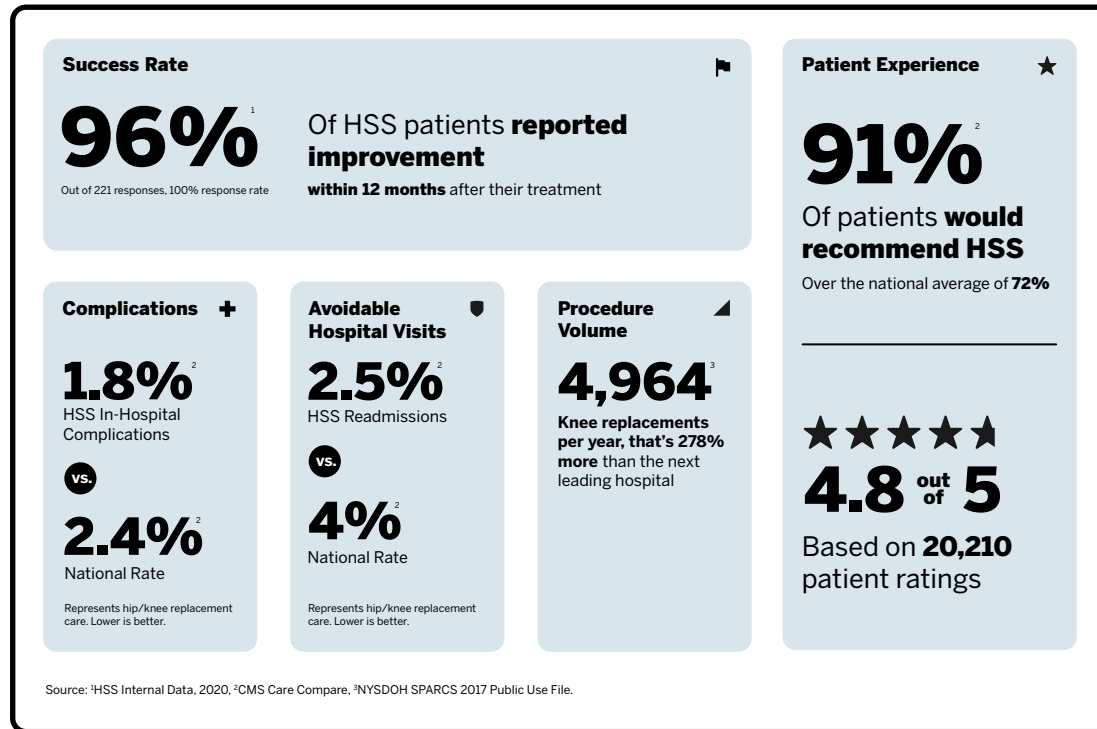
HSS

HSS has developed a new tool called the **Hospital Reliability Scorecard**. The tool features five factors that are important to consider when choosing the best hospital for your needs, so you can better evaluate your options.

This scorecard provides data specific to knee replacement at HSS. But you can ask any hospital for this data, no matter what surgery you need.

## Why the 5 factors of reliability are important

Not all hospitals are the same. Some are more reliable than others. And this difference can increase the chances that you'll experience a setback, such as a complication in the hospital or something else that happens once you're home. The five factors can help you protect yourself from these avoidable risks. Find out which data to ask for and learn why the five factors matter to your health.



## The five factors of reliability

Ask your hospital for this information. The data will be different for each hospital you're comparing.

### 🚩 Success Rate

Tracks whether patients report feeling better one year after treatment. *Higher is better.*

### ★ Patient Experience

Would patients recommend this hospital to others? *Higher is better.*

### + Complications

Shows how often patients develop medical problems while in the hospital. *Lower is better.*

### 🛡️ Avoidable Hospital Visits

Shows how often patients need to be re-hospitalized after their initial treatment. *Lower is better.*

### 📈 Procedure Volume

Practice makes perfect. Seek out a hospital with lots of experience doing this procedure. *Higher is better.*

## About knee replacement

### What

Surgical procedure in which damaged cartilage in the knee is replaced by a metal implant. Also called "knee arthroplasty" or "knee resurfacing."

### Where

Takes place in a hospital or ambulatory surgery center.

### Length of Hospital Stay

Ranges from less than one day to several days, depending on the complexity of the procedure and your overall health.

## Testimonials

"After just 10 weeks, I am back to work and navigating stairs, driving, sitting and standing with no pain and no complications."

David, Knee Replacement

[Click here to see our patient stories >](#)

## Ready to make an appointment?

Speak with an HSS Specialist. Reliable care is good for your health.

[Book online](#)

Or call us directly at 877.606.1555.

## Endorsements



HSS has ranked U.S. #1 in orthopedics since 2010

A comprehensive comparison tool

# Hospital Reliability Scorecard



It's important to make informed decisions about your care. The following questions were designed to help you better understand the differences in how well a hospital performs your procedure for so you can avoid unnecessary risks. Ask your provider for this data. Much of the data is also available at [www.medicare.gov/care-compare](http://www.medicare.gov/care-compare)

	HSS   Hospital for Special Surgery	National/State Rates		
<p><b>Success Rate</b> <i>Higher is better</i></p> <p><b>Q:</b> What is the patient-reported success rate for my procedure?</p>	<p><b>96%</b><sup>1</sup></p> <p>Of patients reported improvement</p>	<p>N/A</p>		
<p><b>★ Patient Experience</b> <i>Higher is better</i></p> <p><b>Q:</b> Are patients likely to recommend this hospital? Ask for the "likelihood to recommend" metric from CMS Care Compare.</p> <p><b>Tip:</b> look for stories from real patients on social media and the hospital website</p>	<p><b>91%</b><sup>2</sup></p> <p>Of patients would recommend HSS</p>	<p><b>72%</b><sup>2</sup></p> <p>National Average</p>		
<p><b>+ Complications</b> <i>Lower is better</i></p> <p><b>Q:</b> What is the complication rate for the hospital? For my procedure?</p>	<p><b>1.8%</b><sup>2</sup></p> <p>In-Hospital Complications</p>	<p><b>2.4%</b><sup>2</sup></p> <p>National Rate</p>		
<p><b>🛡️ Avoidable Hospital Visits</b> <i>Lower is better</i></p> <p><b>Q:</b> What is the rate of re-hospitalizations for the hospital? For my procedure?</p>	<p><b>2.5%</b><sup>2</sup></p> <p>Avoidable Hospital Visits</p>	<p><b>4%</b><sup>2</sup></p> <p>National Rate</p>		
<p><b>▲ Procedure Volume</b> <i>Higher is better</i></p> <p><b>Q:</b> How many orthopedic patients does the hospital see each year? How many patients are seen with my specific condition?</p>	<p><b>4,964</b><sup>3</sup></p> <p>Knee Replacements</p>	<p>N/A</p>		

Ready to make an appointment?

Speak with an HSS Specialist. Reliable care is good for your health.

[Book online](#) →

Or call us directly at 877.606.1555.